

3M Science.
Applied to Life.™

“Gualini Spa A great overview”.

October 18, 2017 – 3M Italia

in collaborazione con:

GUALINI®



Giuseppe Francavilla

Marketing & Sales Manager – Gualini Group

g.francavilla@gualini.eu

Agenda

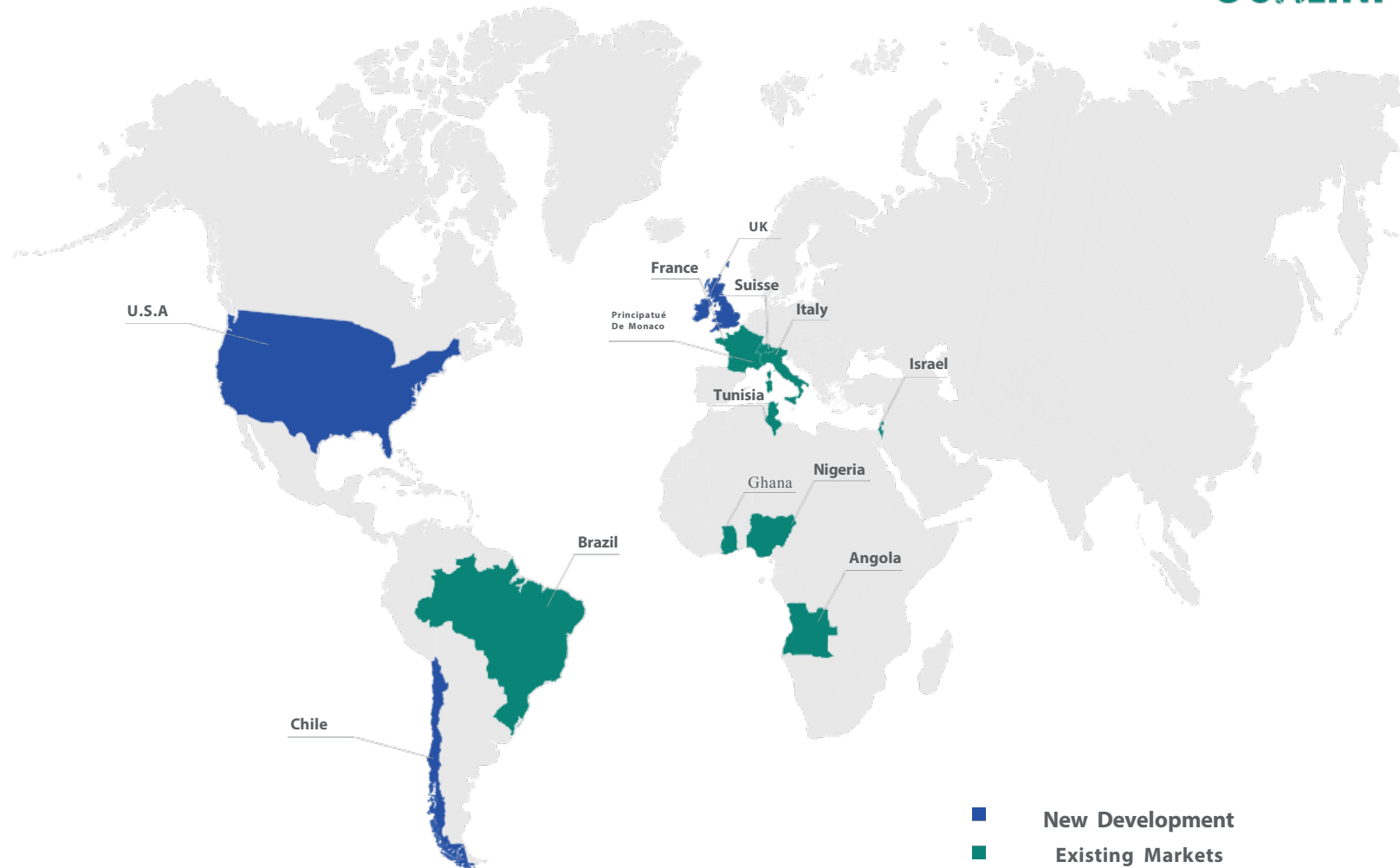
- Gualini Spa: A great overview
- Production Plant
- Main References



Gualini Spa Headquarter – Costa di Mezzate (Bergamo)

World presence

GUALINI



Gualini Spa: Building envelope

- Curtain walling
- Door and window frames
- Ventilated façades
- Metal constructions

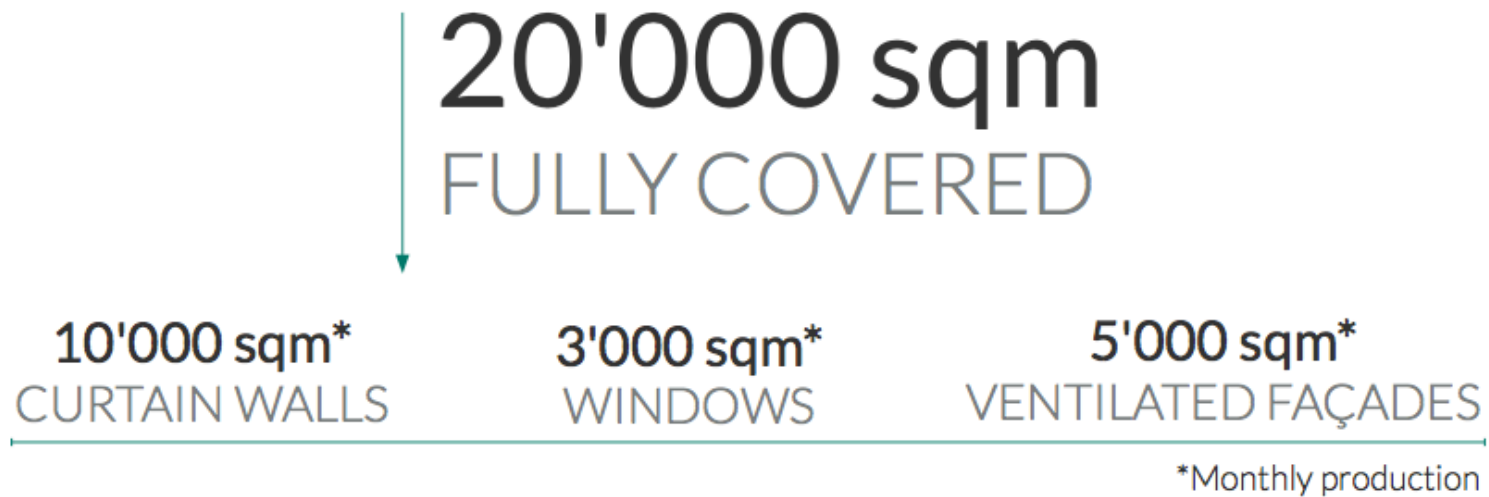
Production plant



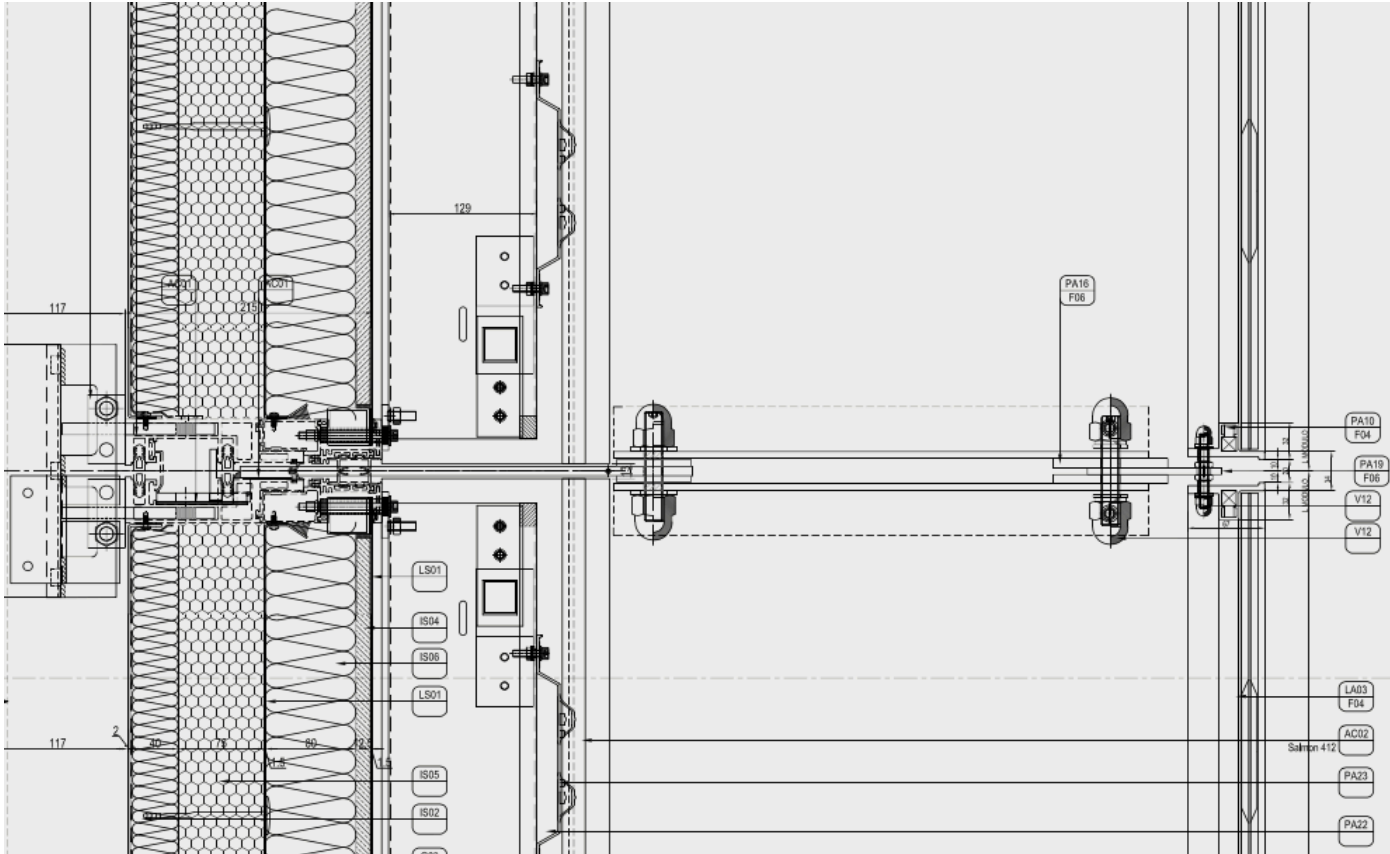
Automated production lines

- **loading units with fully automatic sequences;**
- **CNC machining centres with five or six-axis machining;**
- **unloading units with fully automatic sequences;**
- **co-ordinated and synchronized automatic assembly lines;**
- **stick system curtain walls assembly lines;**

Automated production lines



Technical Department



- Design & engineering
- BIM
- R&D
- Tailor made solutions & systems

Main References

ITALIA ITALY

- Palazzo Italia - EXPO Milano 2015
- Scalo Milano - City Style
- Milanofiori Nord U15
- Gucci Headquarter
- Cariparma - Cuore Verde
- Molino Stucky
- Fondaco dei Tedeschi
- Residenza Pta Nuova - Corso Como

FRANCIA FRANCE

- Allianz Riviera Stadium
- Cité de Loisirs - Batiment Festif
- Arena 92 Stadium
- Cap. 3000

ISRAELE ISRAEL

- Ben Gurion International Airport
- Azrieli Rishonim Center
- Timna Ramon International Airport

USA USA

- 22-44 Jackson Avenue

Molino Stucky - Venezia

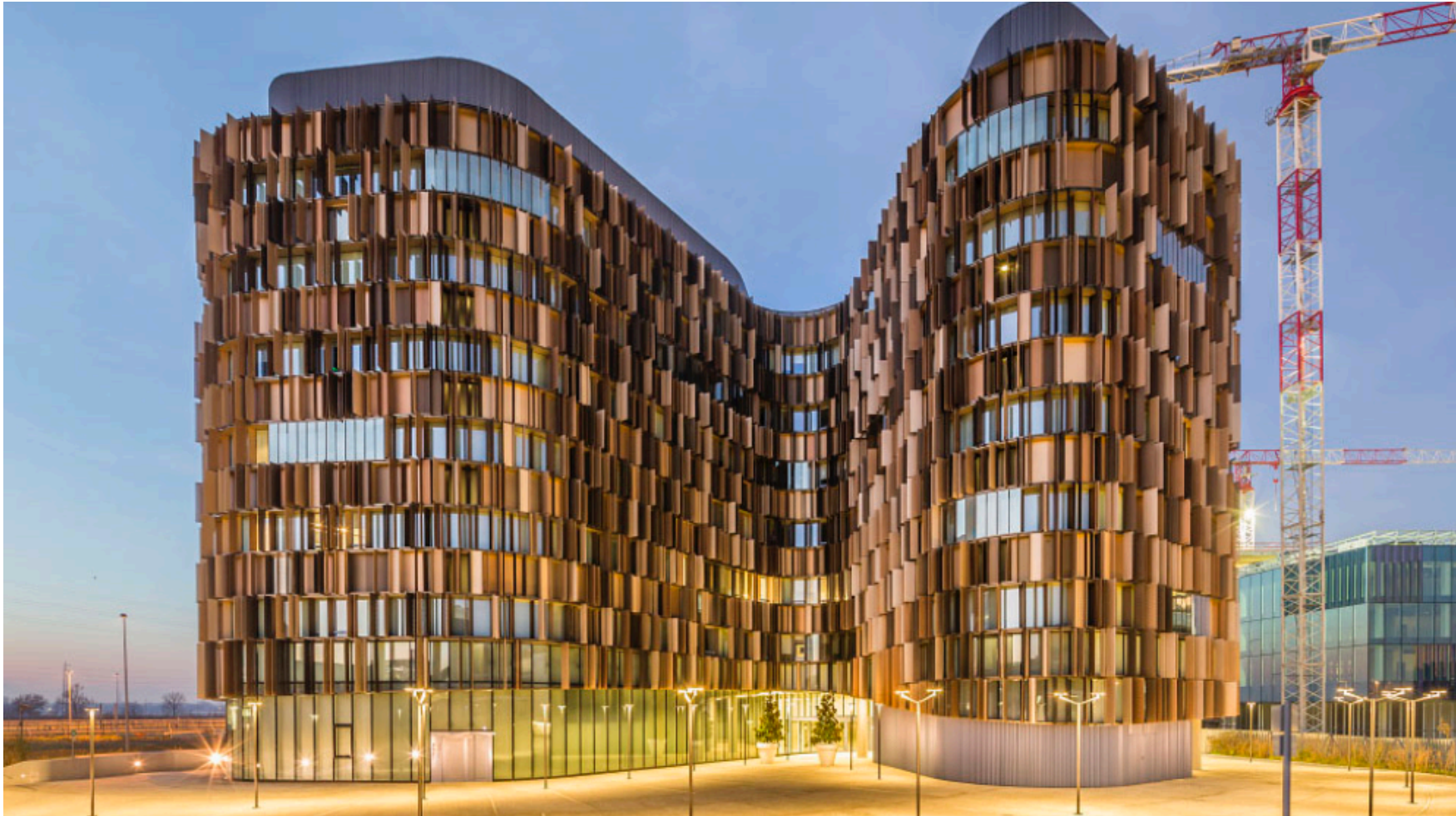


YEAR:
2008

DESIGNERS:
Arch. Giuseppe
Boccanegra

PRODUCTS:
Bronze door &
window frames.

U15 – Milanofiori (Assago)



YEAR:
2011

DESIGNERS:
CZA – Cino Zucchi

PRODUCTS:
Curtain Wall;
Aluminium shade
roof with
customized drilling.

Residenze di Porta Nuova - Milano



YEAR:
2013

DESIGNERS:
Arch. Enrique
Albin

PRODUCTS:
Curtain Wall;
Steel and glass
railing;
Roller
blinds/sunshades.

Allianz Riviera Nice Stadium – Nizza



YEAR:
2014

DESIGNERS:
Wilmotte &
Associessa-Paris,
Arch. Jean-Michel
Wilmotte

PRODUCTS:
Aluminum and
glass curtain walls;
Steel and glass re-
rated curtain walls;
Ventilated Façades.

Palazzo Italia – Expo 2015



YEAR:
2015

DESIGNERS:
Nemesi & Partners

PRODUCTS:
Curtain Wall

Ben Gurion Int. Airport Control Tower - Tel Aviv, Israel



YEAR:
2015

DESIGNERS:
Pelleg Architects

PRODUCTS:
Ventilated Façades;
Curtain walls;
Aluminum door
and window
frames.

Gucci Headquarter - Milano



YEAR:
2016

DESIGNERS:
Piuarch Srl

PRODUCTS:
Stick system
curtain wall.

Fondaco dei Tedeschi - Venezia



YEAR:
2016

DESIGNERS:
Rem Koolhaas -
Ippolito Pestellini
Laparelli
(O.M.A. - Office for
Metropolitan
Architecture)

PRODUCTS:
Brass door &
window frames

Nuova sede Cariparma - Parma



YEAR:
2017

DESIGNERS:
Frigerio Design
Group

PRODUCTS:
Stick system
curtain wall;
Solar shading in
stretched aluminum
sheets.

U Arena Stadium - Paris



YEAR:
2017

DESIGNERS:
Arch. Christian de
Portzamparc

PRODUCTS:
Curtain Wall;
Exterior façades in
aluminum and
glass. External
claddings.

Azrieli Rishonim Center – Rishon Letzion, Israel



YEAR:
2017

DESIGNERS:
Mann-Shinar
Architects &
Planners

PRODUCTS:
Curtain Wall;
Ventilated façades;
External cladding
with Acp panels.

Timna Ramon Int. Airport – Eilat, Israel



YEAR:
2017

DESIGNERS:
Mann-Shinar
Architects &
Planners

PRODUCTS:
Curtain Wall;
Aluminium
cladding.

22 Jackson Avenue – New York City



YEAR:
Work in progress

DESIGNERS:
HTO - Architect

PRODUCTS:
Aluminum window
walls;
Stick curtain walls;
Unitized curtain
walls.

Scalo Milano City Style - Milano



YEAR:
2016

DESIGNERS:
Metrogramma
Arch. Andrea
Boschetti

PRODUCTS:
Stick system
curtain wall;
Ventilated façades
with back-painted
glass;
Canopies in metal
carpentry with
ACP panels
cladding.

Grazie per l'attenzione

g.francavilla@gualini.eu